



sonus

Unity

Suspended Baffle Panels

Helping unify sound in space, this design is effective and versatile. Mix-match colors and panels to create your unique space. This design is conducive to expanded designs and sound control, by adding 4' x 4' flat baffle panels to any part of this grid. Additionally, this design can be suspended around light fixtures or get really creative with cabled LED lighting.

Features

- Two-part designs offered in 2" and 4" thicknesses to manage the most difficult spaces, these lightweight and durable substrates consist of the highest quality rigid 6-7lb fiberglass board.
- Don't worry, this design is easily assembled in the field - no hardware or tools required.
- Simple suspended applications that can be configured for any ceiling application. For added flexibility, the suspension hardware is up to the designer or installer.
- Recommended spacing is 12"-24"; our core offers superior sound control over felt applications and requires less density positioning.

Unity



Size	1' x 8', 1' x 10', 2' x 8', 2' x 10'. Center Square is 4'.
Thickness	2" or 4"
Tolerance	+/- 1/16"
Core	6-7lb Fiberglass Board
Edge Detail	Hardened
Edge Profile	Square
Mounting Type	Ceiling – Hanging
Mounting Hardware	Eye Hooks pre-installed
Flamability	ASTM 84 Class A
NRC	From .80 – 1.05, depending upon: The surface material and cloud or baffle thickness

Our craftsmanship guarantee is really simple:

If there is a craftsmanship defect detected, we will repair or replace the impacted product.

If the product was damaged during shipping and it was because of how we packaged it, we will repair or replace the impacted product.

The length of our guarantee is five (5) years provided you used a Certified PRO Installer; otherwise, it is a standard three (3) years.

For more details, see warranty details on our website.

Lead Time

Standard sizes and coverings: 2-3 weeks

Custom sizes and coverings: 6-8 weeks

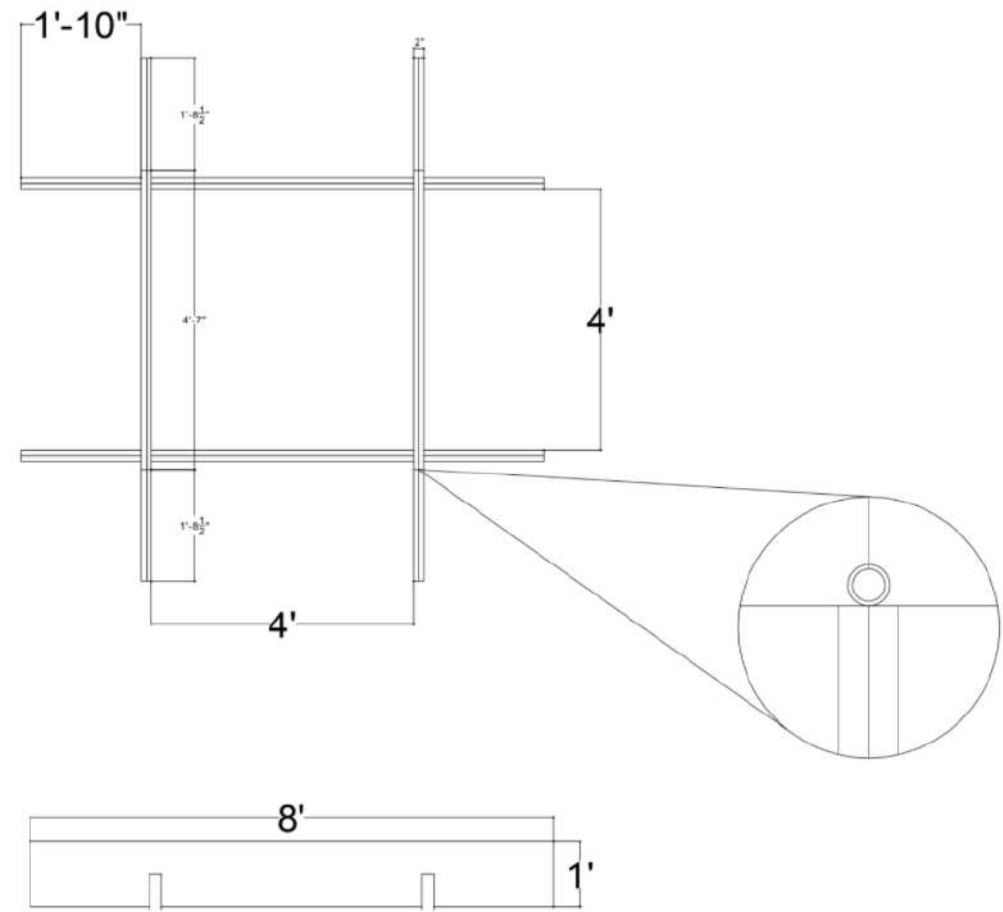
* any customer supplied coverings may require additional time for delivery and testing. Additionally, wood veneers require perforation. Any wood veneers not in stock require an additional 4-6 weeks.

Custom Shop

Need something unique? Want to co-create actionable solutions that improve the human experience? We believe, TOGETHER, we can ideate, design, and build solutions that create unique experiences. Call us to discuss our Custom Shop program.

Suspended Baffle Panels

Unity



Sound Absorption

Hz	125	250	500	1000	2000	4000	N.R.C
DAP-1"	.02	.37	.87	1.09	1.01	1.00	.85
DAP-2"	.21	.78	1.04	1.07	1.06	1.04	1.05

Unity



Standard



Asteroid
2335-2053-GOM-STD



Waterfall
2335-2691-GOM-STD



Birch
2335-2129-GOM-STD



Quarry Blue
2335-2026-GOM-STD



Onyx
2334-20116-GOM-STD



White
2335-2664-GOM-STD



Red Delicious
2335-2014-GOM-STD



Slate
2335-2017-GOM-STD



Wolf
2335-2027-GOM-STD



Pumpkin
2335-2021-GOM-STD

Premium

Premium fabrics may require special order. Additional lead times and charges apply



Talc
W16952-02-Knoll-PRM



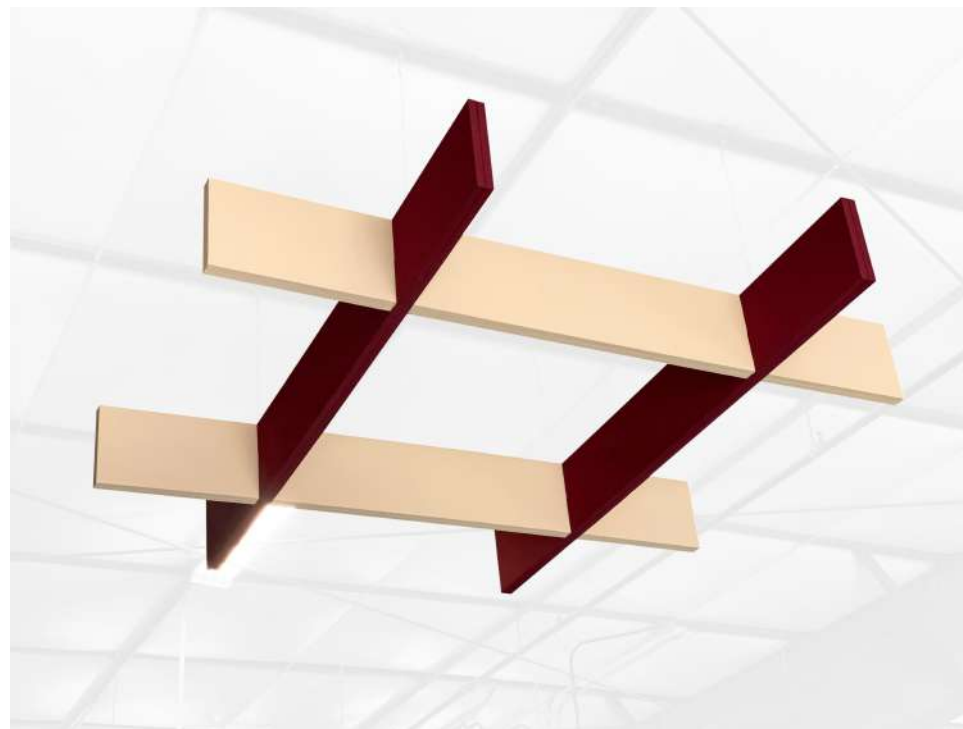
Target
W884-10A-Knoll-PRM



Sharkskin
W884-13A-Knoll-PRM



Electrum
W169510-10-Knoll-PRM



Monitors and printers vary. Please request a material sample to verify materials and colors.